

LTDSU

LTDSU drip bead for façade boards (in ventilated systems)

Material:

- PVC - alkali and UV resistant
- Glass fibre mesh Vertex R117 complying with ETAG 004

Features:

- For façade boards with the thickness of 12,5 mm or greater
- The mesh is welded to the profile - thermal joint
- The pronounced shape of the drip board assures water drainage from the system, elimination of capillarity along the upper door and window part and potential plaster cracking in winter
- Invisible drip edge, under-plaster bead
- Sophisticated shape allows for accurate mortar and plaster application in the required constant thickness
- The chamber structure of the profile increases profile impact resistance and stability
- Corner protection against mechanical damage
- Prevents hair cracks

Instruction for use:

Place the bead with mesh into pre-applied mortar on the façade board surface. Fit the bead to the bottom edge of the board and press into the plaster. Then press the bead mesh into the mortar. Remove and level the excess plaster outside the mesh with a trowel.

Packaging, storage and transport:

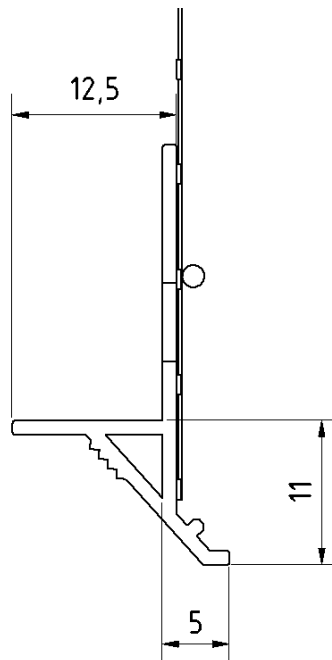
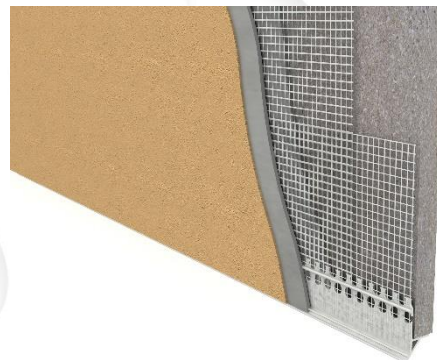
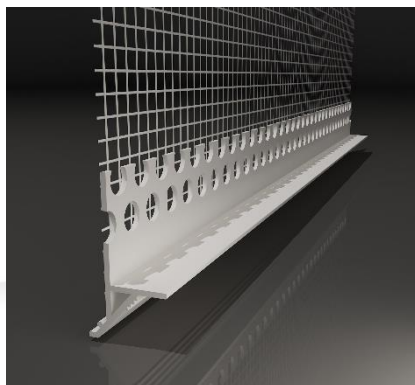
Packed in paper boxes. Store in a dry roofed place at + 5°C ~ + 40°C. Transport in horizontal position.

Certifications and marks:

The product is not subject to any harmonized standard.

Technical data:

Bead length [mm]	2500
Mesh width [mm]	100
Other dimensions	See scheme
Mesh fixation method	Welding with plastic rod (absolutely inert in contact with alkali and temperature changes)



Issued on 1 October 2016.

This update invalidates all previous versions of this technical data sheet. The specified product dimensions are nominal and may range within the permitted manufacturing tolerances.